



ALTAIR® 4XR Multigas Detector

Rugged. Reliable.



WE KNOW WHAT'S AT STAKE.

SAFETY AT THE *SPEED OF NOW*

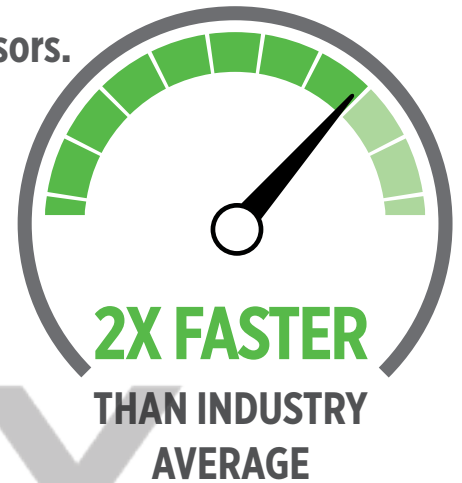


BE SAFER

With rapid-response sensors.

- LEL
- CO
- O₂
- SO₂
- H₂S
- NO₂

POWERED BY
XCell[®]
SENSORS



FLEET MANAGER COMPATIBLE

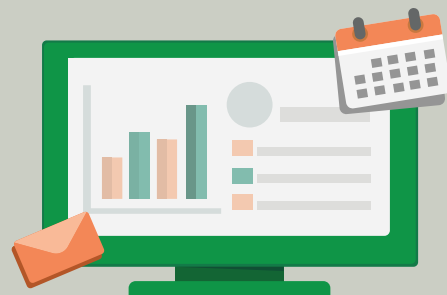
INFORMATION ACCESS

- Receive a daily e-mail notification about your fleet's status. Quickly discern what needs your attention and take action.
- Access your fleet information easily – at anytime and from anywhere.
- Find, download and share reports as you need them—calibrations, detector records or alarms.



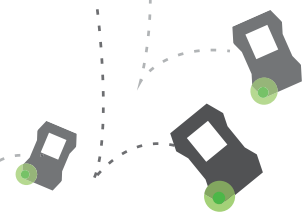
FLEET COMPLIANCE

- Ensure your gas detectors are ready for work (bump tested, calibrated and with sensors functioning properly). Reduce downtime.
- Proactively decommission any equipment that requires maintenance.
- Understand which equipment are in use (by whom) and which ones are available.

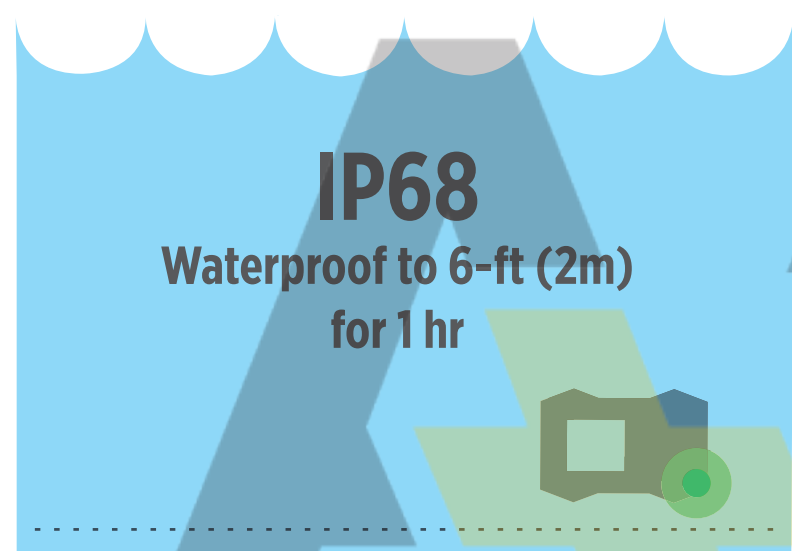
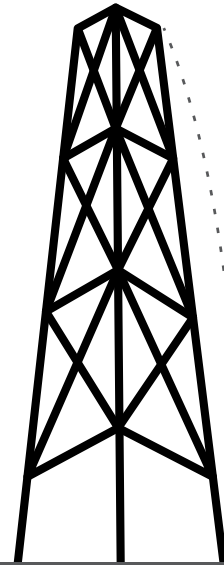




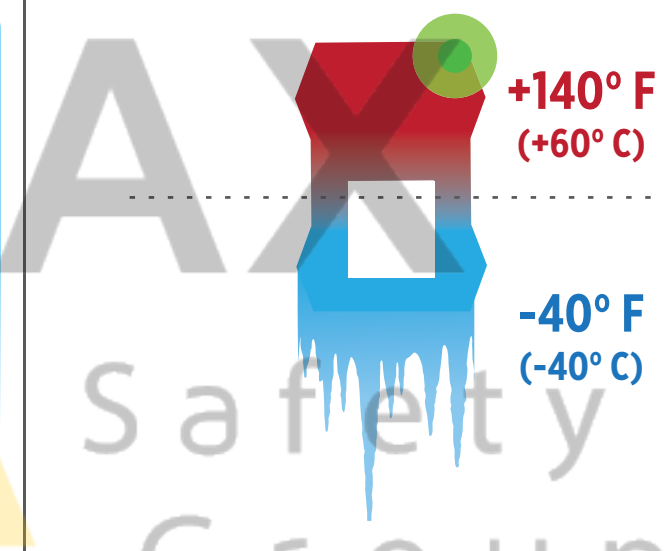
25 drops
from 4-ft (1.2m)



25-ft (7.5m)
drop onto concrete



IP68
Waterproof to 6-ft (2m)
for 1 hr

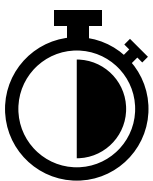


+140° F
(+60° C)

-40° F
(-40° C)

BUILT TO WORK WHEREVER YOU WORK

FAST, EFFICIENT MAINTENANCE



1/2 Time

+

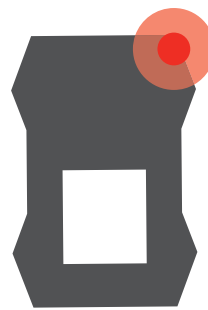


1/2 Test Gas

COMPLIANCE AT A GLANCE



Bumped



Not Bumped

GUARANTEED PERFORMANCE



Instrument & Sensor Warranty

Specifications and Order Information

Specification	Description		
GAS TYPES	Gas	Range	Resolution
	LEL	0-100%	1%
	O ₂	0-30%	0.1%
	CO	0-1999 ppm	1 ppm
	H ₂ S	0-200 ppm	1 ppm
	H ₂ S-LC	0-100 ppm	0.1 ppm
	SO ₂	0-20 ppm	0.1 ppm
	NO ₂	0-50 ppm	0.1 ppm
WARRANTY	4 years (+ optional 1-year extension)		
DURABILITY	25 ft. (7.5 m) drop protection MIL-STD-810G drop protection Certified IP68 rating		
TEMPERATURE RANGE	-40°F to +140°F -40°C to +60°C		
RELATIVE HUMIDITY	5% - 95% intermittent 15% - 90% non-condensing		
POWER	Rechargeable Li-polymer battery 24-hour run-time < 4 hour charge time		
PHYSICAL	4.4" x 3.0" x 1.4" 11 cm x 7.6 cm x 3.5 cm 8 oz (228 g)		
DATALOGGING	> 50 hours (adjustable) > 500 event logs		

ALTAIR 4XR Gas Detector			
Configuration	Case Color	USA/CAN	ATEX
LEL, O ₂ , CO, H ₂ S	Charcoal	10178557	10178573
LEL, O ₂ , CO, H ₂ S	Phosphorescent	10178558	10178569

Need something different? Contact MSA for options.

Kits with ALTAIR (LEL, O ₂ , CO, H ₂ S & Charcoal Case)	
34 liter gas cylinder (1.45% CH ₄ , 15% O ₂ , 60 ppm CO, 20 ppm H ₂ S) Regulator (0.25 l/min)	10178356
ALTAIR Pump Probe 34-liter gas cylinder (1.45% CH ₄ , 15% O ₂ , 60 ppm CO, 20 ppm H ₂ S) Regulator (0.25 l/min)	10178357

MSA GALAXY® GX2 Automated 4XR Test Stands for 1 Gas Cylinder				
Integrated 4XR Charger	N. America	Europe	UK	Australia
Yes	10128630	10128639	10128659	10128669
No	10128642	10128651	10128661	10128671

Need to accommodate multiple cylinders? Contact MSA for options.

Calibration Gas		XCell Sensor Replacement Kits	
1.45% CH ₄ , 15% O ₂ , 60 ppm CO, 20 ppm H ₂ S		EX Combustible	10106722
34-liter cylinder	10048280	O ₂	10106729
58-liter cylinder	10045035	CO/H ₂ S	10106725
ALTAIR Pump Probe with charger		CO/H ₂ S-LC	10121213
		CO-H ₂ /H ₂ S	10121214
		SO ₂ /H ₂ S-LC	10121215
		CO/NO ₂	10121217
		For USA/Canada	10152669
For ATEX/IEC	10052668		

Don't need a charger? Contact MSA for options.

Certifications

North America

USA

Class I, Division 1, Groups A, B, C & D Class II
Division I, Groups E, F, & G Class III, Division I
Ambient temperature: -40°C to +60°C; T4

Canada CSA

CAN/CSA C22.2 No. 152 Combustible Gas Detection
Instruments C22.2 No. 152
Performance Ambient Temperature:
-20°C to +54°C; T4
C22.2 No. 157 Intrinsic Safety Ambient Temperature:
-40°C to +54°C; T4

Europe

Directive 2014/34/EU (ATEX): II 1G Ex ia da IIC T4 Ga,
-40°C to +60°C, IP68
CE 0080
Directive 2014/30/EU (EMC): EN50270 Type 2,
EN61000-6-3

IEC

IECEX
Ex ia da IIC T4 Ga, -40°C to +60°C, IP68

Note: This Bulletin contains only a general description of the products shown. While product uses and performance capabilities are generally described, the products shall not, under any circumstances, be used by untrained or unqualified individuals. The products shall not be used until the product instructions/user manual, which contains detailed information concerning the proper use and care of the products, including any warnings or cautions, have been thoroughly read and understood. Specifications are subject to change without prior notice. MSA is a registered trademark of MSA Technology, LLC in the US, Europe, and other Countries. For all other trademarks visit <https://us.msasafety.com/Trademarks>.

MSA operates in over 40 countries worldwide. To find an MSA office near you, please visit [MSAsafety.com/offices](https://us.msasafety.com/offices).